



**FOYER**  
— OXFORD —



## APPLICATION INFORMATION FOR REFERRERS - SINGLES

Foyer Oxford is a large scale 'Foyer' initiative established by a consortium comprised of Anglicare WA, Foundation Housing and the Central Institute of Technology. Foyer Oxford provides young people experiencing homelessness or at risk of homelessness with fully self-contained transitional housing for up to two years, combined with 24/7 support and opportunities to engage with education, training and/or employment. Foyer Oxford houses up to 98 young people in their own apartments.

### THE BASICS

- Support is structured through the Foyer Deal – a something for something agreement.
- Young People are provided with 2 years in their own apartment with a normal, independent tenancy with Foundation Housing.
- Support is 24/7 and includes allocated Case Manager, Activity Provision, Overnight and Weekend Support.
- Service is onsite at Central Institute of Technology and provides strong access to Education, Training and Work Opportunities.
- A safe, secure, positive, aspirational living environment.

- 98 places available, including 24 places for young parents and their children.

### THE FOYER DEAL

To live in Foyer, young people must sign up to the Foyer Deal. This requires them to:

- Connected with Employment, Education or Training
- Connect with support programs.
- Meet the obligations of a normal lease.
- Follow some limited house rules, particularly limits on visitors.
- Be a positive community member in Leederville and in Foyer Oxford itself





## APPLICATION ELIGIBILITY

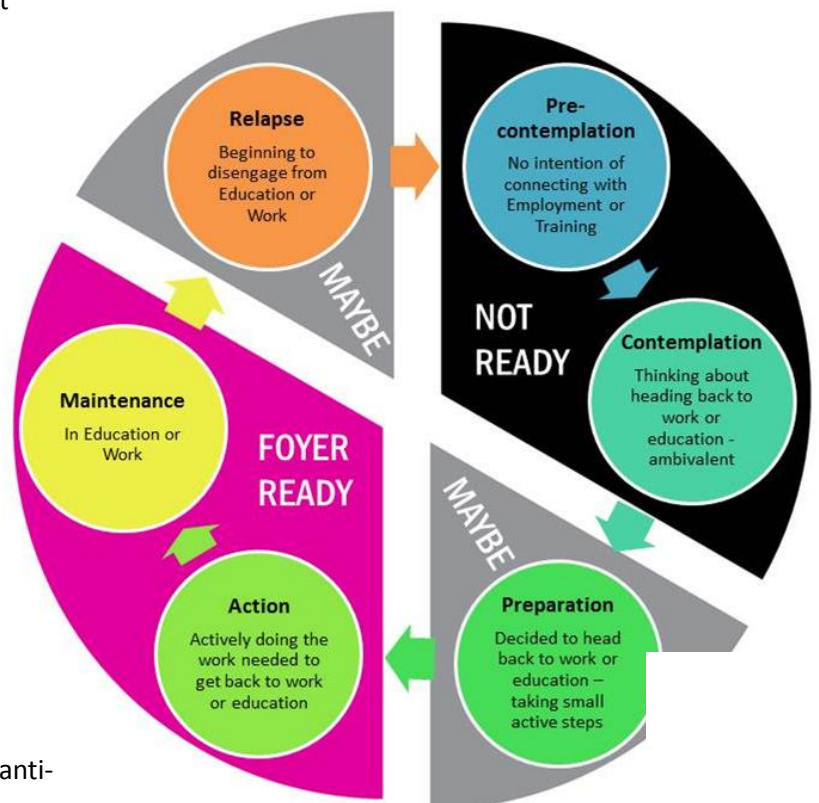
### ELIGIBILITY - SINGLES

- 16-23 years of age
- Homeless or at risk of homelessness
- Willing to engage in supports
- Engaged in education, training or work
- Have an ability to live independently without constant monitoring

- Have an Independent income (at least equivalent to YA independent rate)

### MOTIVATION FOR EMPLOYMENT, EDUCATION AND TRAINING

The Foyer Deal requires young people to connect with Employment, Education or Training. Without sufficient motivation for this, young people will be set up to fail. To check if the young person you have in mind is ready for Foyer see the diagram to the right:



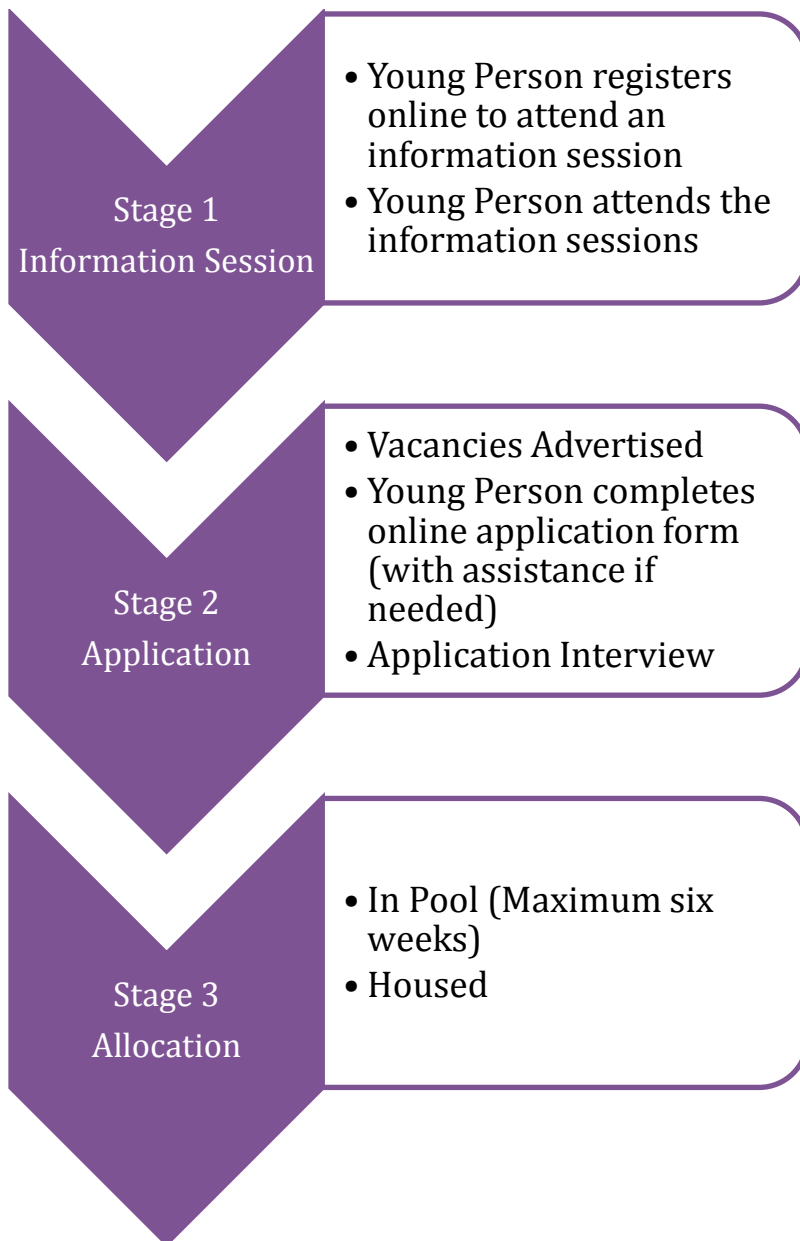
### EXCLUSIONS

- Couples, unless willing to live in separate apartments
- Active, problematic drug use.

### UNLIKELYS

- Unmanaged, significant mental health condition
- History of using violence to solve problems, anti-social behaviour and aggression
- History of problematic drug or alcohol use, no intention of abstinence
- Unable to live independently. For example in need of constant supervision or living skills too low.
- People who are closely connected to the young person (Partner, Family, Friends) are likely to put others in Foyer at risk of physical harm.

# APPLICATION PROCESS – THIS NEEDS WORK FROM GRAPHIC DESIGN



Additional explaining text to go alongside flow chart

## Stage 1

Young people will complete a registration form online that will check their basic eligibility. If young person is eligible for service, they will be booked in an information session at Foyer Oxford. These are held every fortnight. The information session gives young people clear information about what living in Foyer Oxford is all about, including the ability to see the building, meet a current resident and ask any questions about the program. v



## Stage 2

Foyer Oxford will advertise upcoming vacancies on our website, and the form for submitting an online application will be accessible only when we have vacancies. A young person cannot apply for a vacancy unless they have attended an information session.

When completing the form, it must be the young person's voice that is heard (even when a service is helping them to complete it) and the young person must sign the form as it gives consent for us to check their eligibility and contact referees should we need to explore any concerns prior to booking an interview.

If the application form indicates that a young person is appropriate for the program then we will offer an interview within 1 week of receiving the application form. They will need to attend this interview independently, without support as it gives them an opportunity to demonstrate their capacity to manage living independently. Young people will be informed of the outcome within 2 weeks of the interview.

## Stage 3

Once a young person has been accepted into the service they will enter a small allocation pool (6 people) Practical support will be offered through a case manager at Foyer Oxford from this point, and they will be able to join in Foyer Oxford activities and events if they wish.

Young people will be given a move in date shortly after entering the pool, which will be based on ensuring a stable and diverse mix of young people in Foyer.

### PREPARING YOUNG PEOPLE FOR FOYER OXFORD

There are a number of things services can do to prepare young people for living in Foyer, or applying for Foyer:

- Assist young people to explore options for employment and training. Get young people access to some good career development services.
- Be clear about the expectations of living in Foyer, don't sugar coat the experience.
- Enable young people to engage with Foyer independently as much as is possible. Make sure their engagement is on their terms.
- Integrate elements of the 'Foyer Deal' into case planning you are doing together.
- Assist young people to develop routines, and stabilise barriers.
- Talk to a Foyer case manager about "what it would take" for a particular young person to be ready for Foyer by presenting a case summary (with the young person's consent). Foyer Oxford staff may work with you for a planned exit from your service into Foyer Oxford.



# SINGLE APPLICANTS FAQ'S

## ***How do I refer a young person to Foyer Oxford?***

Foyer Oxford would like young people to take responsibility for their own application process. You can assist them to register online for an information session, and help them to attend the info session.

## ***Is there a waitlist?***

No, Foyer Oxford does not have a waitlist. We will only accept applications as vacancies arise, on a first come first-served basis.

## ***How do I know when there is a vacancy?***

Foyer Oxford will advertise that is open for applications on the Foyer Oxford website. Young people who have attended an information session will also be notified via email of upcoming vacancies.

## ***How long will it take to get a young person into Foyer Oxford?***

If they are appropriate, a young person will be housed within 10 weeks of submitting an application form.

## ***How much is rent?***

Rent is based on age: under 22's pay \$138/wk inc utilities. 22 and over pay \$148 inc utilities. Young parents pay \$244/wk. Rent does not change according to income. (Accurate at time of writing, Oct 2013).

## ***Does Foyer Oxford take couples?***

Not at this stage, the apartments are really designed for singles. If a couple is willing to have separate apartments, and both are ready for the Foyer Deal, this may be possible.

## ***Pets?***

Crazy Crabs, Goldfish and Pet Rocks only.

## ***Is there a curfew?***

No, young people can come and go as they please. There are some limits on visitors and the times they can visit.

## **IF YOU THINK A MISTAKE HAS BEEN MADE**

Foyer Oxford staff are happy to review any decision that has been made in regards to a young person's application for Foyer Oxford. If you feel like an error in assessment, or other decision has been made, please direct your query to the Manager of the Foyer Project: [jethro\\_sercombe@anglicarewa.org.au](mailto:jethro_sercombe@anglicarewa.org.au).

## ***Does the Foyer only take low risk young people?***

No! The Foyer maintains a balance of young people who have low, medium and high support needs. This may mean that we need to plan entries for young people with higher support needs. Foyer Oxford relies on creating an aspirational community of young people, so getting the mix is important to the success of the community. Foyer is not for everybody though, with high expectations placed on young people for engagement and living positively in community.

## ***How does Foyer determine who is 'Foyer ready'?***

As part of the intake process one of the case management team will complete an assessment interview with the young person and then follow up with referee checks to get a comprehensive view of a young person's suitability for Foyer. Decisions are based on the impact that Foyer Oxford might have on the young person, as well as the impact the young person may have on the community at Foyer Oxford.

## ***What kind of study or employment do young people need to be in to live at Foyer?***

We encourage young people to work or study to their capacity, usually full time hours. Young people do not have to be studying at Central Institute of Technology to be eligible for Foyer Oxford. In our experience young people who enroll in courses motivated only to meet the Foyer Deal find it hard to maintain their studies. Completely online study is not usually accepted as meeting the requirements of the deal.

## ***If the Foyer is 24/7 supported, can it take clients who need lots of supervision and monitoring?***

24/7 supports in Foyer are onsite, but they are not there to closely monitor young people's day to day living. Young people must be able to manage themselves independently to stay in Foyer, for example in looking after their unit, paying rent and feeding themselves.

